

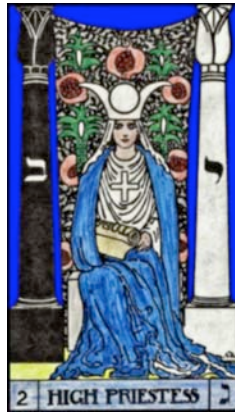
Tarot And The Kabbalah

Lesson Eight

By Gary Meister, CTM

At this point, we have assigned the “pip cards” to the ten Sephiroth (spheres) of the Kabbalah’s Tree Of Life. And we’ve assigned The Fool (Potential) to Path 0 (between Crown and Wisdom) and The Magician (Attention) to Path I (between Crown and Understanding). If you need to, to get a handle on how we got to where we are right now, review the previous lessons. Actually, I would suggest that you print out the PDF copies as we go along and keep them in a loose-leaf binder for future study.

Now: Path II is a long path running between the Crown (Sphere 1) and Beauty, (Sphere 6). We assign the Major Arcana Key II, The High Priestess, to this path.



She sits on a stone cube between two ornate pillars, one black, one white, symbolizing the positive and negative polarities of the energy that makes up

everything in the universe. (Not positive and negative as in *good* and *bad*, but positive (+) and negative (-) *polarities*, as in electromagnetic fields.) This polarity is also indicated by the equal-armed cross at her breast and the palms and pomegranates (male and female) printed on the veil behind her. (In Tarot, *male* and *female* are another way of symbolizing + and -.) You will see this positive and negative symbolism often as you study Tarot; it is a *balance* that is present in *everything* in reality. The Universe enforces this balance constantly—through Karma.

Now: on her lap, partially covered by her robe, she holds a scroll. On it are the letters, T O R A, *Divine Law*, indicating her *hidden wisdom*.

To The High Priestess we give the esoteric designation, “*Remember*”. As The Fool symbolized *Awareness*, as he passed back and forth between *Crown* and *Wisdom*, and The Magician represented *Attention*, passing back and forth from *Crown* to *Understanding*, The High Priestess denotes the need to *Remember* what we see and learn in this process. The Creative Principal followed this same pattern as It (He) created All-There-Is.

When a baby first becomes *Aware* of itself, it starts noticing things around it and things, like hands and feet, that seem to be part of it. After a while, it begins to find that it can control some of these things—again, like hands and feet. By giving its *Attention* to these things, it can move them at will. There is another

important step here, though. Although the baby can control his limbs, etc., he has to start all over each time he thinks of it. So—he needs to *Remember* how he does this so it can become automatic over a period of time. This third step is *Remember*, in this life and in all processes either above or below our plane of existence.

Bring this up to the creation of a project—Somehow a creative idea enters your mind. It could be a new way to decorate your home, or the building of a new business. It doesn't matter what the new idea is, the process is the same.

First, you become *Aware* of the idea; you look at it and think, “that's a good idea!” To take it any further, you have to give it your *Attention*. In this *Attention* step, you begin to pay *Attention* to things you read or hear about this sort of thing. And now we come to this very important step... It doesn't matter how much you read or hear, it doesn't do you any good at all unless you *Remember* it! That's what learning is all about; first you give the subject your *Attention*, and then you *Remember* what you have learned. So—the creative process has begun.

In A Reading: In this system, The High Priestess carries the same meaning in a reading as she does on the Tree of Life—*Remember!* Remember *what(?)* has to do with what the querent's question is. Say the question is, “I've just met a new man that I really like. Could this become a good relationship?” You draw The

High Priestess—*Remember*. You would (at least *I* would) describe what is going on in the card, as I did earlier for you.

And you tell her, “One of the esoteric keywords for this card is: *Remember*. This indicates that you have learned many things about relationships in the past. Tarot is telling you that it is important for you to *Remember* what you have learned. There are many facets to a good relationship—and a bad one! Try to *Remember* what qualities in past partners led to a break-up. Compare these qualities with those of this new man. Is he a similar person? Or, does he appear to be different, nicer? Tarot indicates that you might want to take it slow for a while before you decide if you really *want* to have a relationship with this new man. Once you are sure—Go for it!”

This is one way you can stretch the reading out and make it clearer to your querent. Try some of your own. Work with the High Priestess this month, so you’ll really *know* her before we move on.

See you next time! 😊

Bright Blessings ~ Gary Meister, CTM